



SOUTH BEND | ELKHART
REGIONAL PARTNERSHIP

REGIONAL
ECONOMIC
DEVELOPMENT
STRATEGY
2018

A REGION COMES TOGETHER

WHERE WE'VE BEEN

Years from now, people will point to this period of time as a turning point for the South Bend - Elkhart Region. People who live in the 47 smart, connected communities within northern Indiana and southwestern Michigan are coming together to achieve collectively what they couldn't individually.

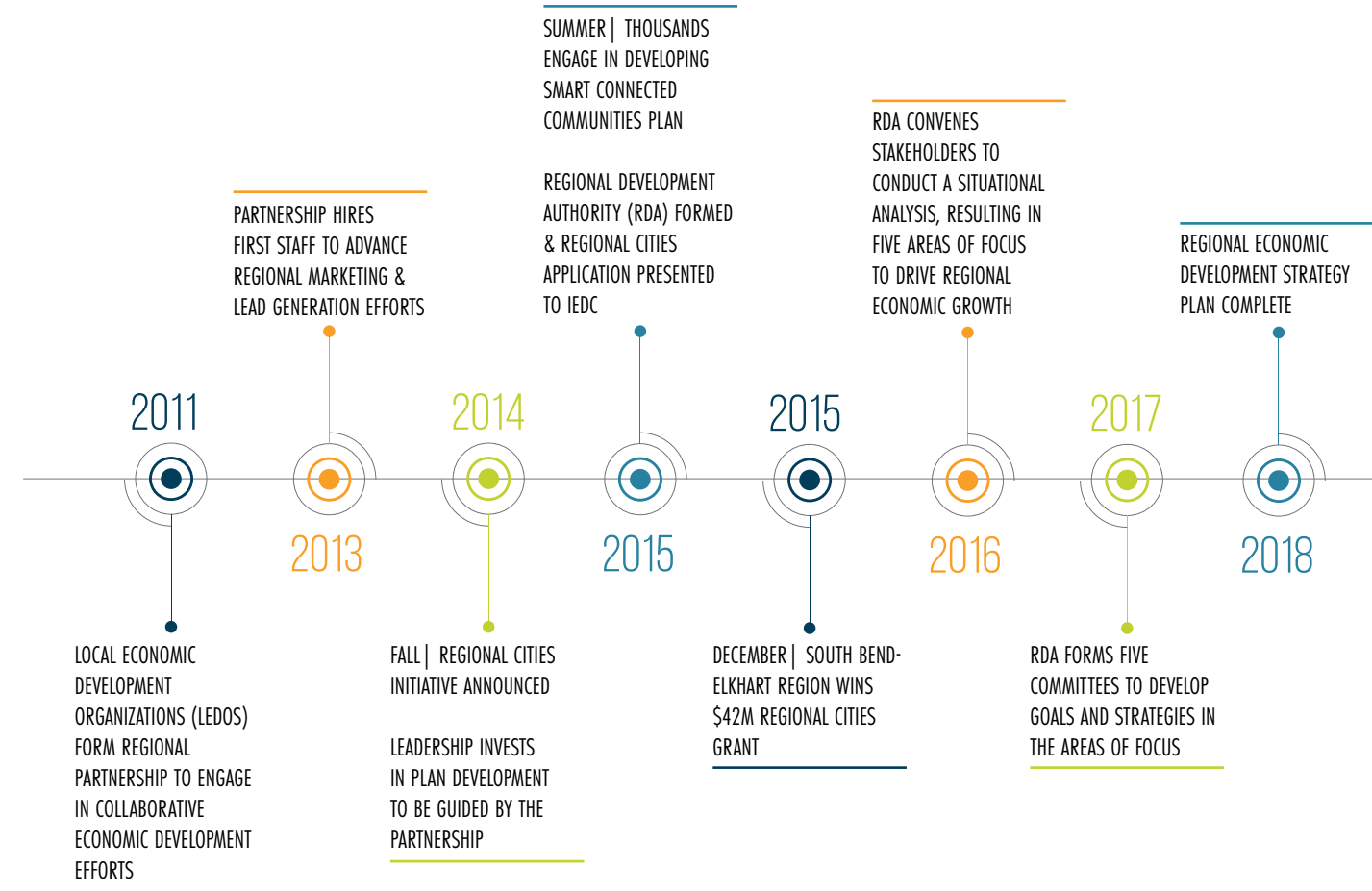
After rebuilding from the Great Recession of 2008-09, employers were again expanding and leaders started working together to build the region. In 2011, seven local economic development organizations formed Michiana Partnership and the first staff was hired in 2013. The Partnership became instrumental in bringing regional leaders together. In the fall of 2014, a group led by the Partnership agreed to pursue a Regional Cities grant from the state of Indiana.

The region's success in winning the \$42 million grant demonstrated how the region working together is in everyone's best interest and served as a catalyst for formation of the Regional Development Authority. Even as the RDA was implementing the regional cities

projects, community leaders voiced strong interest in developing a comprehensive plan that would build economic strength in the region and lead our efforts beyond the quality of place focus. Throughout 2016 and 2017, the RDA convened hundreds of stakeholders in developing strategies in support of the overarching goal to increase per capita personal income in the region to equal or surpass the national average.

The region has immense resources to compete not just in the Midwest, but globally, for skilled workers. It has an abundance of manufacturing know-how, transportation infrastructure, and higher education institutions. The region's entrepreneurs have a long history of innovating to create useful products and services as well as provide thousands of jobs.

The South Bend - Elkhart Region needs more than a singular win. In order to grow prosperity, in order to make the region thrive as one offering great jobs, cool places to live and play, and inclusive communities, we need to continue to work together as a region to achieve what we can't as individual communities.



REGIONAL COLLABORATION

COMMITTEE MEMBERS

EDUCATION & WORKFORCE

TERRY ALLISON
CO-CHAIRMAN
IU South Bend

BRIAN WIEBE
CO-CHAIRMAN
Horizon Education Alliance

JOHN AFFLECK-GRAVES
RDA LIAISON
University of Notre Dame

PETE MCCOWN
RDA LIAISON
Community Foundation of Elkhart County

JIM CAWTHON
Ancilla College

JAN CERVELLI
Saint Mary's College

GREGG CHENOWETH
Bethel College

TOM COLEY
Ivy Tech Community College

LEX DENNIS
enFocus

KATE LEE
South Bend Regional Chamber

ROSE MEISSNER
Community Foundation of St. Joseph County

MIKE SANDERS
Purdue Polytech

GREG VOLLMER
WorkOne

TALENT ATTRACTION

DIANA LAWSON
CO-CHAIRWOMAN
Elkhart County CVB

ROB DECLENE
CO-CHAIRMAN
Visit South Bend
Mishawaka

DALLAS BERGL
RDA LIAISON
INOVA Federal Credit Union

JOHN DESALLE
RDA LIAISON
Hoosier Racing Tire

ERIN BONIN
Kruggel Lawton CPAs

MARK BRINSON
City of Goshen

RADHARANI B. MAGALLON
Latino Student Alliance of Elkhart County

SAM CENTELLAS
La Casa de Amistad, Inc.

MARVIN CURTIS
IU South Bend

DAVID DAUGHERTY
Goshen Chamber of Commerce

KYLE HANNON
Greater Elkhart Chamber of Commerce

JOE HART
South Bend Cubs

CHRIS HOOLEY
Berkshire Hathaway Realty

CORI HUMES
Marshall County CVB

ERIC KANAGY
SimpleSense

KARA KELLY
Saint Mary's College

JULIA KING
Goshen Common Council

CHUCK LEHMAN
Lehman and Lehman

PETE OWSIANOWSKI
Integritas Search LLC

AARON PERRI
South Bend Venues, Parks & Arts

BRIAN PRINCE
Flaherty & Collins Properties

MEGHAN SULLIVAN
Fidelity National
Title-Indiana

CHRIS STAGER
Economic Development Corporation of Elkhart County

ANDREW WIAND
enFocus

LINDA YODER
Marshall County
Community Foundation

CRYSTAL WELSH
City of Elkhart

DIVERSITY & INCLUSION

TRACY GRAHAM
CO-CHAIRMAN
Graham Allen Partners

KRISTIN PRUITT
RDA LIAISON
Lake City Bank

JACQUELINE BARTON
Specialized Staffing Solutions

BETHANY HARTLEY
Startup Moxie

REDGINA HILL
Bethel College

MARIAN HODGES
Data Realty

JESSICA KOSCHER
ADEC

TIM SEXTON
University of Notre Dame

AMISH SHAH
Kem Krest

MARCIA TATAY
Graham Allen Partners

ISSAC TORRES
Intercambio Express

STARTUP SOUTH BEND-ELKHART

LARRY GARATONI
CHAIRMAN
HQ Investments

PETE MCCOWN
RDA LIAISON
Community Foundation of Elkhart County

BOB BERNHARD
University of Notre Dame

TIM BRAUN
EmNet, LLC

STEVE BRENNEMAN
ATC Trailers

MAX BRICKMAN
Heartland VC

RICH CARLTON
Data Realty

JERRY CHAVEZ
Marshall County Economic Development Corporation

SHANE FIMBEL
Trek10

GARY GIGOT
Vennli

IRIS HAMMEL
RISE

JIM KEENAN
Leighton Foundation

JIM LARKIN
Catalyst/Lark Investments

GINA LEICHTY
Eyedart Creative Studio

GAVIN FERLIC
Elevate Ventures

JOHN MILLER
Founder, Smart-Temps

GARY NEIDIG
ITAMCO

AMISH SHAH
Kem Krest

BRYAN RITCHIE
University of Notre Dame

COMMITTEE MEMBERS

REGIONAL ECONOMIC DEVELOPMENT STRATEGY

INDUSTRY GROWTH

REGINA EMBERTON
CO-CHAIRWOMAN
South Bend-Elkhart Regional Partnership

JAN FYE
CO-CHAIRWOMAN
SEA Results Advisors, LLC

PETE MCCOWN
RDA LIAISON
Community Foundation of Elkhart County

DAVE BEHR
Indiana Economic Development Corporation

CHRISTIAN BROWN
South Bend Regional Chamber

JERRY CHAVEZ
Marshall County Economic Development Corporation

BILL DAVIS
Hilltop Wealth Solutions

MELANIE DEFORD
University of Notre Dame

MARK DOBSON
Economic Development Corporation of Elkhart County

CHRIS FIELDING
Cressy Commercial Real Estate

SCOTT FORD
Bradley Co.

AUSTIN GAMMAGE
City of South Bend

BARKLEY GARRETT
Southwestern Michigan Economic Growth Alliance

NICK KEIFFER
Goshen Chamber of Commerce

SHELLEY KLUG
Indiana Michigan Power

AARON KOB
St. Joseph County Airport Authority

JEFF REA
South Bend Regional Chamber

JAMES TURNWALD
Michiana Area Council of Governments

PAT MCMAHON
Retired, University of Notre Dame

KEN PRINCE
City of Mishawaka

BILL SCHALLIOL
St. Joseph County

GEORGE SPOHRER
Retired, Crowe Horwath

CHRIS STAGER
Economic Development Corporation of Elkhart County

ABBY WILES
City of Elkhart

A SPECIAL THANK YOU—

PETE MCCOWN
CHAIR

MARSHALL KING
COMMUNICATIONS DIRECTOR

EMILY MACELLARI
GRAPHIC DESIGNER

2018-2025

WORKFORCE

TALENT

INDUSTRY

STARTUP

INCLUSION

RAISE THE POST-SECONDARY ATTAINMENT LEVELS FROM **30 TO 50 PERCENT**

TRANSFORM NET MIGRATION TO A **POSITIVE IN-MIGRATION**

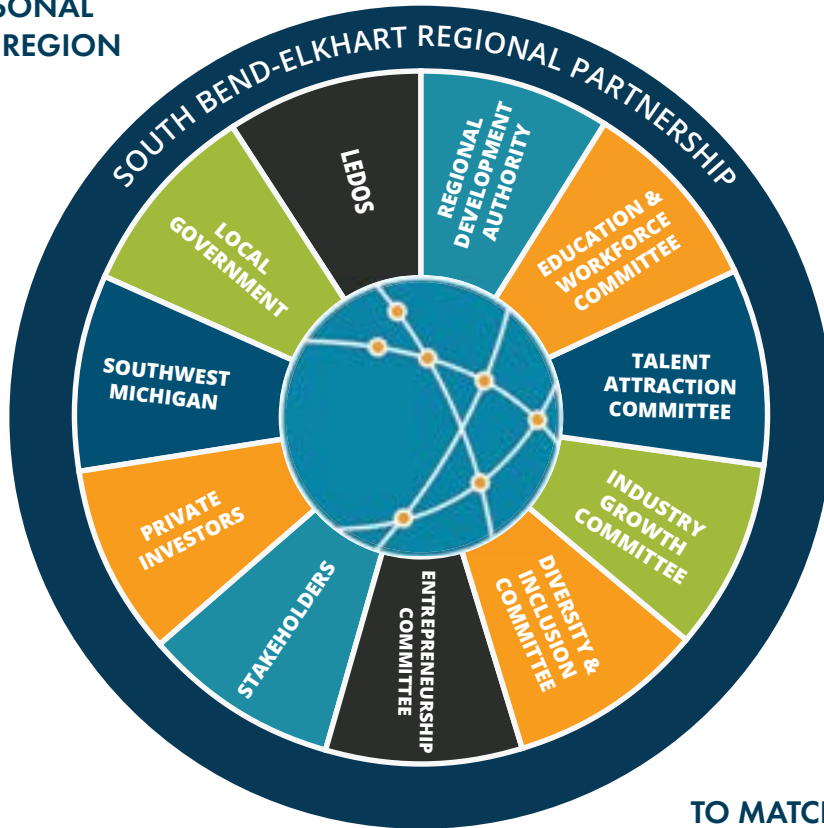
GROW JOBS IN HIGHER PAY TRADED INDUSTRY CLUSTERS **BY 20 PERCENT**

ESTABLISH 200 **HIGH POTENTIAL** STARTUPS

IMPROVE THE REGION'S NATIONAL RANK OF MINORITY INCOME DISPARITY TO THE **80TH PERCENTILE**

INCREASE

PER CAPITA PERSONAL
INCOME IN THE REGION



TO MATCH OR EXCEED THE
NATIONAL AVERAGE BY

2025

FOR MORE INFO: [SOUTHBENDELKHART.ORG](https://southbendelkhart.org)

574.400.5432

[INFO@SOUTHBENDELKHART.ORG](mailto:info@southbendelkhart.org)